

Order Code	Description
<input type="checkbox"/> UTGM1	PosiTector Standard with UTG M Probe
<input checked="" type="checkbox"/> UTGM3	PosiTector Advanced with UTG M Probe

PosiTector [®] <i>UTG</i> Ultrasonic Thickness Gage	Compare PosiTector Gage Bodies	
Features	Standard	Advanced
HiLo alarm — Audibly and visibly alerts when measurements exceed your specified limits	●	●
Min Scan - measurement rate of up to 20 readings per second with on-screen min and max for quick inspection over a large area	●	●
A Scan - with adjustable Gain with screen capture for further analysis and documentation		●
B Scan - display in which a cross sectional profile of the test material is represented		●
Graphics readout for detailed analysis of the coating system		●
Statistics Mode — Instantly calculate average, standard deviation, min/max thickness and number of readings while measuring	●	●
Two year warranty on body AND probe	●	●
Reading Storage Capacity	250 per probe	100,000 in up to 1,000 batches
Onscreen Batch Annotation — Add notes, change batch names and more with built-in QWERTY keyboard		●
Multiple stored calibration adjustments for measuring on a variety of substrate conditions		●
Connection Options		
Sealed USB port for fast, simple connection to a PC and to supply continuous power. USB cable included.	●	●
Bluetooth 4.0 technology for data transfer to a mobile device running the PosiTector App or optional portable printer. BLE API available for integration into third-party software.		●
WiFi technology wirelessly synchronizes with PosiSoft.net and downloads software updates		●



PosiTector UTGM3

Removeable Cabled Probe	Probe Model UTG M	
	Probe Type:	5 MHz Dual Contact
	Thru-Paint Capability:	Single Echo: No Multiple Echo: Yes
	*Measurement Range - Single Echo:	0.100" to 5.000" 2.50 to 125.00 mm
	*Measurement Range - Multiple Echo:	0.100" to 2.500" 2.50 to 60.00 mm
	Resolution:	0.001" 0.01 mm
	*Accuracy:	±0.001" ±0.03 mm

*Measurement range is for carbon steel and depends upon surface condition, temperature and material.

UTG M Probe features Thru-Paint capability to quickly and accurately measure the metal thickness of a painted structure without having to remove the coating. Also ideal for measuring applications requiring a more durable wear face.

- 5 MHz contact probe with wear resistant alumina probe tip
- Multiple-Echo technique averages 3 or more echoes for accurate and reliable readings
- Toggle easily between Single and Multiple Echo modes (Visit www.defelsko.com/echo-modes)

Order Code	Description
<input type="checkbox"/> UTGM1	PosiTector Standard with UTG M Probe
<input checked="" type="checkbox"/> UTGM3	PosiTector Advanced with UTG M Probe

All Gages Feature...

Simple

- Pre-programmed velocities – Simply select from a list of common materials or enter your own with ease
- SmartCouple™ – Eliminates inadvertent decoupling - ideal for analyzing large areas using multiple passes
- Enhanced one-handed menu navigation
- RESET feature instantly restores factory settings

Durable

- Solvent, acid, oil, water and dust resistant — weatherproof
- Shock-absorbing, protective rubber holster with belt clip
- Two year warranty on gage body AND probe

Accurate

- Precision ultrasonic transducers provide fast, accurate readings
- Certificate of Calibration showing traceability to NIST included (Long Form)
- Conforms to national and international standards including ASTM E797
- Built-in temperature compensation ensures measurement accuracy


Versatile

- High Contrast LCD with backlit display
- Single or two point adjustment
- Inch/mm switchable
- Selectable display languages
- Flip display enables right-side-up viewing
- Uses alkaline or rechargeable batteries (built-in charger)



Powerful

- Min Scan - measurement rate of up to 20 readings per second with onscreen min and max for quick inspection over a large area
- Statistics mode continually displays/updates average, standard deviation, min/max thickness and number of readings while measuring
- HiLo alarm audibly and visibly alerts when measurements exceed user-specified limits
- Screen Capture — save screen images for record keeping and review
- Sealed USB port for fast, simple connection to a PC and to supply continuous power. USB cable included.
- Software updates via web keep your gage current
- Every stored measurement is date and time stamped
- Software Solutions for viewing, analyzing & reporting data. See page 3 for a complete overview of these options.



Advanced Models Feature A-Scan & B-Scan

A-Scan with adjustable Gain and screen capture

B-Scan—displays a cross sectional profile of the test material (*shown on left*)



Award Winning Compatibility!

PosiTector body accepts all PosiTector 6000, 200, RTR, SPG, DPM, SST, SHD and UTG probes easily converting from a coating thickness gage to a surface profile gage, dew point meter, soluble salt tester, Shore hardness durometer or ultrasonic wall thickness gage.



Comes complete with PosiTector gage body, UTG M probe, couplant (ultrasonic gel), protective rubber holster with belt clip, wrist strap, 3 AAA alkaline batteries, instructions, protective lens shield, convenient carrying case, Long Form Certificate of Calibration traceable to NIST or PTB, USB cable, PosiSoft Software, two (2) year warranty.

SIZE: 146 x 61 x 28 mm (5.75" x 2.4" x 1.1")

BODY WEIGHT: 140 g (4.9 oz.) without batteries

CONFORMS TO: ASTM E797

PosiSoft® Suite of Software

Four FREE and unique ways to view and report your PosiTector and PosiTest data

PosiSoft Desktop — PC/Mac

Powerful desktop software for downloading, viewing, printing and archiving measurement data. No internet connection required.

- Import readings directly from the gage via USB or from legacy PosiSoft desktop versions
- Synchronize measurement data including readings, notes and pictures to and from PosiSoft.net
- Import/Export Templates and Jobs to share with other users
- **NEW** Import PDF forms and overlay **Custom Fields** for automatic population of inspection and measurement data
- Report preview automatically refreshes as changes are made



PosiSoft.net — Web-based

A web-based application offering secure centralized management of readings. Access your data from any web-connected device.

- Synchronize data when connected via USB or WiFi
- Synchronize measurement data including readings, notes and pictures with PosiSoft Desktop and PosiTector App
- Securely store measurement data in the cloud and share with authorized users via a secure login



Jobs Batches Readings

PosiTector App — Mobile

Mobile app connects PosiTector Advanced instruments, the PosiTector SmartLink and the PosiTest AT-A to your *iOS* or *Android* smart device.

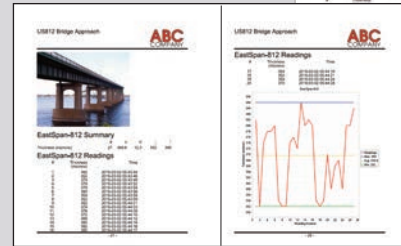
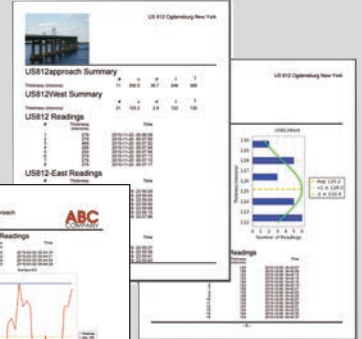
- Auto pairing Bluetooth BLE connection
- Automatically generate user-formatted reports and share via email, text, cloud storage services like Dropbox, and more
- Export readings to PosiSoft Desktop or synchronize readings to and from PosiSoft.net for further reporting and archival options



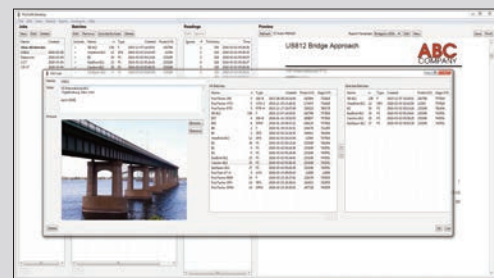
PosiSoft Custom PDF Report Generator

Easily create reports from your measurement data in seconds.

featured on
PosiSoft Desktop
PosiSoft.net
PosiTector App

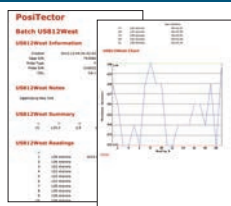


- Include inspection information such as on-site pictures, screen captures, notes and more to communicate important details
- Create and save multiple custom layouts as templates – insert cover pages, add logos/images, and select font and point size
- Select the information to include for each product type – charts, histograms, readings, time stamps and more
- Compile multi-batch reports from one or more probes and instrument types
- Export readings as comma separated value (.CSV) files which can easily be imported into Excel and other supporting applications



Jobs feature consolidates batches into groups to keep measurement data organized and to quickly create multi-batch reports (not available on PosiTector App)

PosiSoft USB Drive — Gage Based



A simple gage interface to retrieve data in a manner similar to USB flash drives, cameras, or digital audio players. No software to install or internet connection required.

- View and print readings and graphs using universal PC/Mac web browsers and file explorers
- Measurement data can be printed quickly from a formatted HTML report or exported in .CSV format for further analysis in spreadsheets
- Simple file management - Copy and paste measurement data from the PosiTector to a local folder on your computer, network folder or cloud drive
- Access stored screen captures (snapshots) of the PosiTector display