

Order Code	Description
<input checked="" type="checkbox"/> SPGOS1	PosiTector Standard with SPG OS Probe
<input type="checkbox"/> SPGOS3	PosiTector Advanced with SPG OS Probe

PosiTector[®] SPG

Surface Profile Gage

Compare PosiTector Gage Bodies

Features	Standard	Advanced
Large 2.8" impact resistant color touchscreen with redesigned keypad for quick menu navigation	•	•
Fast measurement rate of over 50 readings per minute—ideal for quickly and accurately measuring large surface areas	•	•
Statistics Mode—Instantly calculate average, standard deviation, min/max thickness and number of readings while measuring	•	•
Two year warranty on body AND probe	•	•
Reading Storage Capacity	1,000 per probe	250,000 in up to 1,000 batches
Live graphing of measurement data		•
Touchscreen keyboard for quickly renaming batches, adding notes, and more		•
SmartBatch™ allows entry of user-defined parameters and criteria to comply with various standards and test methods		•
Connection Options		
USB port for fast, simple connection to a PC and to supply continuous power. USB cable included.	•	•
WiFi technology wirelessly synchronizes with PosiSoft.net and downloads software updates		•
Bluetooth 4.0 Technology for data transfer to a mobile device running the PosiTector App or optional portable printer. BLE API available for integration into third-party software.		•



PosiTector SPG OS1

Removable Cabled Probe	Probe Model SPG OS	
	Application:	Blasted Steel
	Measuring Range:	0 - 500 μ m 0 - 20 mils
	Accuracy:	\pm (5 μ m + 5%) \pm (0.02 mils + 5%)
	Tip:	Angle 60 degree*
		Radius 50 μ m (2 mils)

*30 degree tips available for conformance to Australian standard AS 3894.5-C

The PosiTector SPG OS is a surface profile gage ideal for measuring the peak-to-valley surface profile height of flat or convex surfaces with an OD above 3mm (0.125") such as pipes and tanks.

An optional Large V-groove Adaptor is available to assist with probe placement when measuring on a pipe or tank with an OD between 30 cm (12") and 46 cm (18").

All Gages Feature...



Simple

- Fast measurement rate of over 50 readings per minute—ideal for quickly and accurately measuring large surface areas
- Large 2.8" impact resistant color touchscreen with redesigned keypad for quick menu navigation
- On-gage help explains menu items at the touch of a button
- RESET feature instantly restores factory settings



Durable

- Alumina wear face and tungsten carbide tip for long life and continuous accuracy—field replaceable tips
- Weatherproof, dustproof, and water-resistant—IP65-rated enclosure
- Ergonomic design with durable rubberized grip
- Rugged, indoor/outdoor instrument—ideal for field or shop use
- Shock-absorbing protective rubber holster for added impact resistance
- Two year warranty on gage body AND probe



Accurate

- Certificate of Calibration showing traceability to NIST or PTB included
- Built-in temperature compensation ensures measurement accuracy
- Glass zero plate and metal shim included
- Conforms to national and international standards including ASTM



Versatile

- PosiTector body accepts all PosiTector SPG, RTR, 6000, 200, DPM, IRT, SST, SHD, BHI, GLS, and UTG probes easily converting from a surface profile gage to a coating thickness gage, dew point meter, soluble salt tester, hardness tester, gloss meter, or ultrasonic wall thickness gage
- Cabled probes available for blasted steel, textured coatings, and concrete profile
- Auto rotating display with Flip Lock

Order Code	Description
<input checked="" type="checkbox"/> SPG0S1	PosiTector Standard with SPG OS Probe
<input type="checkbox"/> SPG0S3	PosiTector Advanced with SPG OS Probe



Powerful

- Continually displays/updates average, standard deviation, min/max, and number of readings while measuring
- Screen Capture—save 100 screen images for record keeping and review
- HiLo alarm audibly and visibly alerts when measurements exceed user-specified limits
- Instant-on feature quickly powers up the gage if recently powered down
- Up to 30% longer battery life
- USB port for fast, simple connection to a PC and to supply continuous power. USB cable included.
- PosiSoft USB Drive—stored readings and graphs can be accessed using universal PC/Mac web browsers or file explorers. No software required.
- Every stored measurement is date and time stamped
- Includes PosiSoft suite of software for viewing and reporting data (see page 3)

Award Winning Compatibility!

PosiTector body accepts all PosiTector 6000, 200, DPM, IRT, RTR, SPG, SST, SHD, BHI, GLS, and UTG probes easily converting from a coating thickness gage to a dew point meter, surface profile gage, soluble salt tester, hardness tester, gloss meter, or ultrasonic wall thickness gage.



Comes complete with PosiTector gage body, SPG probe, glass zero plate, metal check shim, protective rubber holster, wrist strap, 3 AAA alkaline batteries, instructions, hard case, protective lens shield, Long Form Certificate of Calibration traceable to PTB, USB cable, PosiSoft Software, two (2) year warranty on body and probe.

***SIZE:** 127 x 66 x 25.4 mm (5" x 2.6" x 1")

***WEIGHT:** 137 g (4.9 oz.) without batteries

CONFORMS TO: ASTM D4417-B, AS 3894.5-C (with optional 30° tip), U.S. Navy NSI 009-32, SANS 5772 and others

*Size and weight are for the PosiTector gage body only and do not include the probe.

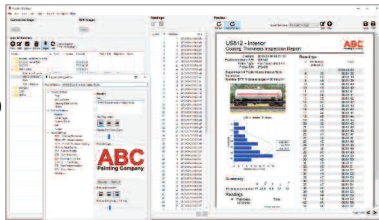
PosiSoft® Suite of Software

Powerful ways to view and report your PosiTector and PosiTest data

PosiSoft Desktop — PC/Mac

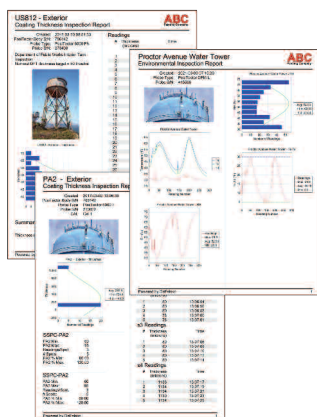
Powerful desktop software for downloading, archiving, and reporting measurement data.

- Import readings directly from the gage via USB, WiFi, or legacy PosiSoft Desktop versions
- **Jobs feature** consolidates batches into groups to keep measurement data organized and to quickly create multi-batch reports
- Fully integrates with PosiSoft.net—backup and synchronize jobs, batches, readings, and report templates to the cloud (see inset at right)
- Export readings as .csv (comma separated value) files for easy import into Excel and other spreadsheets



Professional, Custom Reports

- Compile single or multi-batch reports from multiple probes and instrument types
- Add pictures, screen captures, notes, and more with an onscreen live preview
- Instantly create professional reports from pre-formatted report templates
- Design custom layouts and templates—add custom cover pages and logos, and choose to display charts, histograms, and/or individual readings
- Drag-and-drop Custom Fields mode—import PDF forms and overlay fields to automatically populate inspection data



Prompted Batch Mode

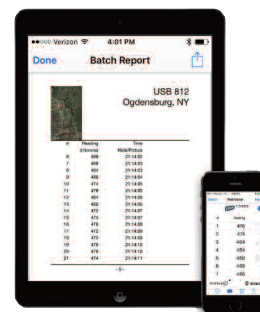
Create pre-defined batches with onscreen text and image prompts for each reading and upload to PosiTector 6000, 200, and UTG gages (*Advanced models only*).

- Ideal for ensuring a consistent measurement pattern for repetitive jobs or when specific measurement locations are required

PosiTector App — iOS/Android

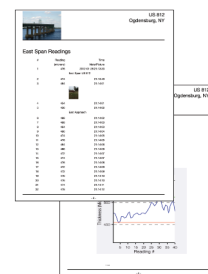
Fully-featured mobile app that connects to the PosiTector SmartLink, PosiTector Advanced gages, and the PosiTest AT-A.

- Auto pairing Bluetooth BLE connection
- Add images and notes to individual readings or batches directly from your device
- Email readings as .csv (comma separated value) files for easy import to Excel and other spreadsheets.
- Synchronize readings with PosiSoft.net—backup and synchronize jobs, batches, and readings to the cloud (see inset below)



Mobile Reporting Solution

- Compile single or multi-batch reports from multiple probes and instrument types
- Add pictures, screen captures, notes, and more
- Email pre-formatted or custom reports from your device instantly



PosiSoft.net

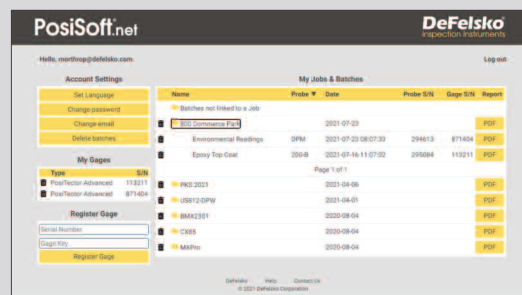
Secure storage of measurement data in the cloud.

compatible with **PosiSoft Desktop** and **PosiTector App**

- Upload measurement data directly from WiFi-connected PosiTector Advanced gages from anywhere in the world—no software required
- Synchronize and share measurement data across multiple computers

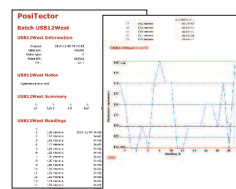
Ideal for...

- Users with multiple computers, instruments, and office locations
- Inspection companies managing data from multiple inspectors
- Login from PosiSoft Desktop to synchronize all measurement data and stored report templates from your account



PosiSoft.net Web Viewer Review measurement data and print simple, pre-formatted PDF reports from any web browser—no software installation required.

PosiSoft USB Drive — Gage based



A simple gage interface to retrieve data in a manner similar to USB flash drives or cameras. No software to install or internet connection required. Measurement data can be printed quickly from a formatted HTML report or exported in .csv format for further analysis in spreadsheets.

PosiTector Developer Resources

•Bluetooth 4.0 •WiFi •Keyboard Mode •USB Serial

PosiTector and PosiTest AT-A instruments can integrate with third-party software, drones, ROVs, PLCs, and robotic devices using several industry-standard communication protocols including: Bluetooth 4.0, WiFi, Keyboard mode, and USB serial.



© DeFelsko Corporation USA 2021. All Rights Reserved. Technical Data subject to change without notice. • Printed in USA • PSoft.v.LW/W2110

DeFelsko
Inspection Instruments

DeFelsko Corporation • 800 Proctor Ave. • Ogdensburg, New York 13669-2205 USA
Toll Free 1-800-448-3835 • Tel: +1-315-393-4450
techsale@defelsko.com • www.defelsko.com

Made in U.S.A.