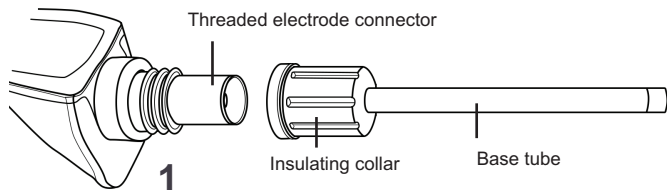


# PosiTest® **LPD** Cabled Wand Assembly Instructions

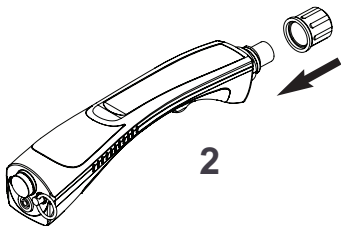
Addendum to Instruction Manual v. 1



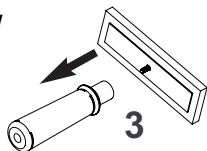
- 1) Unscrew the sponge hardware from the *Base Tube*. Then remove the *Base Tube* by unscrewing the *Insulating Collar*.



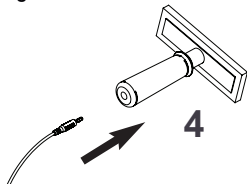
- 2) Reattach the *Insulating Collar* to the *Threaded Electrode Connector*



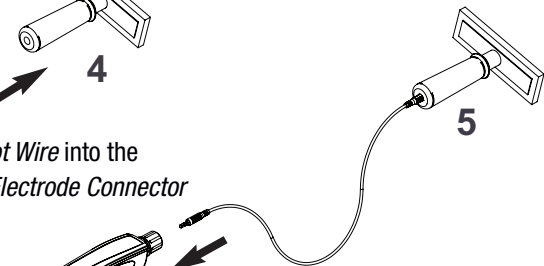
- 3) Assemble the **PosiTest LPD Cabled Wand** by screwing the sponge hardware to the Wand handle.



- 4) Plug the *Hot Wire* into the *Cabled Wand jack*

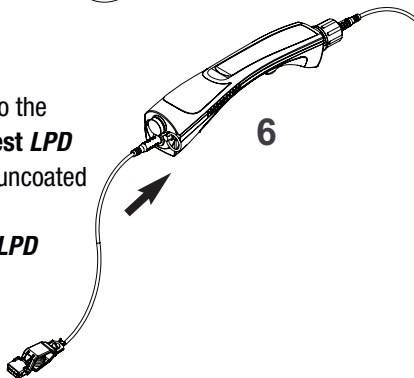


- 5) Plug the *Hot Wire* into the *Threaded Electrode Connector*



- 6) Attach the *Ground (Earth) Wire* to the *Ground Wire Jack* on the **PosiTest LPD** and connect the wire clip to an uncoated point of the part being tested.

**IMPORTANT:** See the **PosiTest LPD** Instruction Manual for complete operating instructions.



**DeFelsko**<sup>®</sup>  
Inspection Instruments