

# PosiTest<sup>®</sup> **HHD** Series

*High voltage Holiday Detectors*

Detect holidays, porosity, pinholes,  
leaks, and other discontinuities



*PosiTest HHD  
shown with  
optional spring  
electrode*

*Available in Stick-Type  
or Wand-Style models*



*Wand-Style*

*PosiTest HHD C  
shown with  
optional brush  
electrode*



**DeFelsko<sup>®</sup>**  
The Measure of Quality

# PosiTest® HHD Series

## Features...

### Simple

- Easy-to-use with bright, color LCD
- Ready to measure—includes everything needed for testing
- Audibly and visibly alerts when flaws/holidays are detected
- Lightweight, ergonomic design provides comfortable all-day use, reducing fatigue
- Voltage calculator feature—input the coating thickness to automatically calculate the required test voltage according to international standards

### Durable

- Rugged, environmentally sealed ABS plastic enclosure
- Weatherproof, dustproof, and shockproof
- Included hard shell case with custom foam inserts for superior protection
- Two year warranty

### Accurate

- Built-in certified voltmeter (crest meter, jeep meter) displays and regulates the voltage at the electrode
- Long Form Certificate of Calibration included with each instrument
- Conforms to national and international standards including ISO, ASTM, and NACE

### Versatile

- Output voltage adjustment: 0.5 – 1 kV: 10 Volt Steps  
>1 kV: 100 Volt Steps
- A wide range of rolling spring electrodes and wire brushes are available. Custom sizes available upon request.
- Industry-standard connectors and adaptors for compatibility with nearly all existing electrodes

### Powerful

- Strobe light and loud audible alarms emitted when a holiday is detected
- Loud audio alarm remains audible in noisy environments
- Removable Smart lithium-ion battery

### Safe

- Press-and-hold Safety Trigger helps prevent accidental high voltage generation
- 7.6 m (25') ground (earth) cable with locking connector and spring clamp
- Shock proof/creep proof—internally sealed to minimize creep distance to high voltage components. Designed in accordance with IEC 61010-1.

Comparison Chart		HHDKIT	HHDKITB	HHDCKIT
DC Output		Pulsed		Continuous
Output Voltage Range		0.5 – 35 kV		0.5 – 30 kV
Output Accuracy		±5%		
Power Supply		Removable, rechargeable Li-ion		
Typical Battery Life for selected rolling springs @ 10 kV	Ø 12"	40 hrs.	16 hrs.	16 hrs.
	Ø 40"	30 hrs.	12 hrs.	12 hrs.
Operating Temperature		-20° to 60°C -4° to 140°F		

**ALL KITS COME COMPLETE** with Holiday detector, 7.6 m (25') ground (earth) cable with ground clip, Li-ion battery pack, smart charger with universal AC voltage input, stainless steel fan brush, instructions, durable hard shell case, Long Form Certificate of Calibration traceable to NIST, two year warranty

## Select Stick-type or Wand style

Available as a stick-type with pulsed DC or a compact wand style with continuous DC.

### PosiTest HHD Stick-Type

Detect holidays using pulsed DC

- User adjustable voltage range from 0.5 – 35 kV
- Voltage calculator feature—choose one of 11 international standards, and input the coating thickness to automatically calculate the required test voltage
- Optional handheld wand accessory converts the detector into a wand configuration ideal for testing hard-to-reach areas (suitable for voltages < 15 kV)
- Audio alarm mode can be adjusted for differing environments



### Available in 2 kit configurations:

#### PosiTest HHD Kit

**Includes ALL features as shown on left plus...**

- Pelican Storm hard shell case with custom foam inserts for maximum protection
- 72 Wh Li-ion battery with built-in charge state indicator
- Choice of 50 cm (20") or 13 cm (5") electrode rods
- Shoulder strap

#### PosiTest HHD Basic Kit

**Includes ALL features as shown on left plus...**

- Heavy duty hard shell case with custom foam inserts
- 36 Wh Li-ion battery with built-in charge state indicator
- 13 cm (5") electrode rod

#### UNIT SIZE:

64 cm x 6.4 cm x 13 cm  
(25" x 2.5" x 5")

#### UNIT WEIGHT:

1.6 kg (3.6 lbs.)  
with 72 Wh battery (no electrodes)

### PosiTest HHD C Compact Wand Style

Detect holidays using continuous DC

**Includes ALL features as shown on left plus...**

- User adjustable voltage range from 0.5 – 30 kV
- Powerful Li-ion batteries fit neatly within the compact wand handle eliminating the need for a separate battery box—reducing weight and operator fatigue
- 43 cm (17") extension rod available for detection on floors and hard-to-reach areas



#### UNIT SIZE:

33 cm x 10.8 cm x 8 cm  
(13" x 4.25" x 3.1")

#### UNIT WEIGHT:

0.74 kg (1.63 lbs.)  
with batteries (no electrodes)

### Ordering Guide

<b>PosiTest HHD Kit</b> To substitute a Short Electrode Rod, append '-S' to the product code (i.e. HHDKIT-S)	HHDKIT
<b>PosiTest HHD Basic Kit</b>	HHDKITB
<b>PosiTest HHD C Kit</b>	HHDCKIT

Conforms to ASTM D4787/D5162/D6747/D7953/G62, ISO 29601, NACE SP0188/SP0274/SP0490, AS3894.1

# PosiTest<sup>®</sup> HHD Series Electrode Options

For a complete list of available electrodes visit [www.defelsko.com/hhd](http://www.defelsko.com/hhd)

## Rolling Spring Electrodes

Rolling Spring Coil for 4" pipe (102 mm) OD	HHDSPRING4
Rolling Spring Coil for 6" pipe (152 mm) OD	HHDSPRING6
Rolling Spring Coil for 8" pipe (203 mm) OD	HHDSPRING8
Rolling Spring Coil for 10" pipe (254 mm) OD	HHDSPRING10
Rolling Spring Coil for 12" pipe (304 mm) OD	HHDSPRING12
Rolling Spring Coil for 14" pipe (356 mm) OD	HHDSPRING14
Rolling Spring Coil for 16" pipe (406 mm) OD	HHDSPRING16
Rolling Spring Coil for 20" pipe (508 mm) OD	HHDSPRING20
Rolling Spring Coil for 24" pipe (610 mm) OD	HHDSPRING24
Rolling Spring Coil for 30" pipe (762 mm) OD	HHDSPRING30
Rolling Spring Coil for 36" pipe (914 mm) OD	HHDSPRING36

Custom sizes available upon request

**Please Note:** Each spring includes two pre-installed spring couplers. A spring connector (HHDCONNECT) is required to attach the PosiTest HHD to the spring couplers. Custom sizes and bulk pricing available. Additional couplers (HHDCOUPLER - 2 pack) are available.

## Flat Wire Brush Electrodes

Flat Brush 51 mm/2"	HHDFLTBRSH2
Flat Brush 152 mm/6"	HHDFLTBRSH6
Flat Brush 203 mm/8"	HHDFLTBRSH8
Flat Brush 305 mm/12"	HHDFLTBRSH12
Flat Brush 610 mm/24"	HHDFLTBRSH24
Flat Brush 914 mm/36"	HHDFLTBRSH36
Flat Brush 1219 mm/48"	HHDFLTBRSH48

Custom sizes available upon request

## Half Circle Neoprene Brush Electrode

Half Circle Brush 50-127 mm/2-5"	HHDHCBRSH5
----------------------------------	------------

## Fan Brush Electrode\*

Fan Brush 152 mm/6"	HHDFANBRSH
---------------------	------------

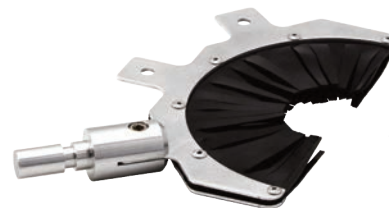
\* All PosiTest HHD Kits come complete with a Fan Brush.

## Conductive Rubber Paddle

Conductive Paddle 102 mm/4"	HHDPADDLE
-----------------------------	-----------



Rolling Spring Electrodes



Half Circle Neoprene Brush Electrode



Flat Wire Brush Electrodes

Use spring and brush electrodes made by other manufacturers with DeFelsko adaptors:

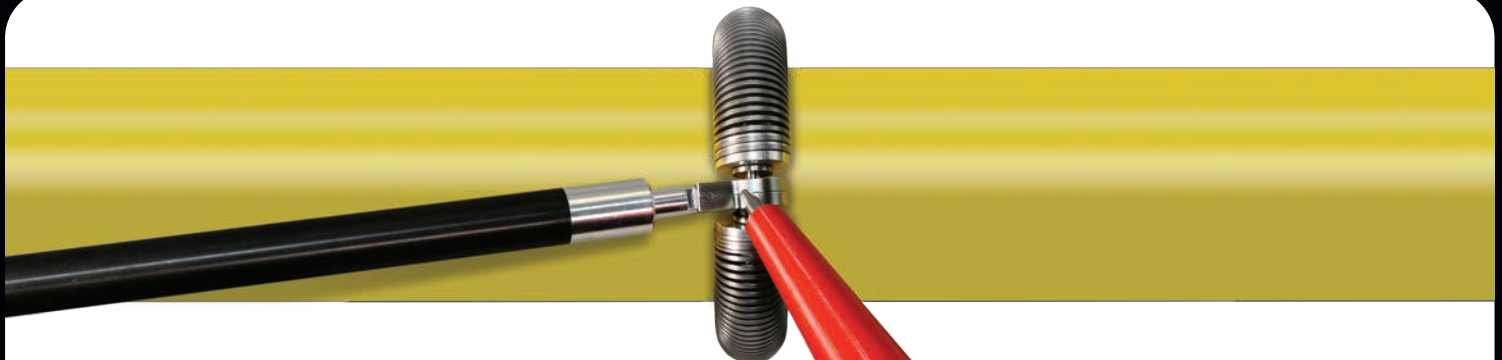
## Compatibility Chart

Model	Adaptor Ordering Code
SPY	not required <sup>†</sup>
PCWI	HHDPCWIADPT
Tinker and Razor	HHDTRADPT
266 & 280	HHD266ADPT

<sup>†</sup> The PosiTest HHD series is compatible with SPY coils, brushes, and accessories.

# Accessories

- **PosiTest HHD and PosiTest HHD C Verifiers** standalone voltmeters (crest meter, jeep meter) for verifying the accuracy and operation of either pulsed or continuous holiday detectors
  - **PosiTest HHD Verifier** (HHDVERIFY) for verifying the accuracy of pulsed DC holiday detectors such as the PosiTest HHD
  - **PosiTest HHD C Verifier** (HHDCVERIFY) for verifying the accuracy of continuous DC holiday detectors such as the PosiTest HHD C.
- **Handheld Wand** (HHDWAND) with 1.5 m insulated cable converts the detector to a wand-type instrument—for voltages up to 15 kV (for use with PosiTest HHD only)
- **Electrode Rods** to extend the reach of holiday detectors—for use with optional spring and brush electrodes,
  - **HHD Electrode Rods** choose between 13 cm/5" (HHDEXTRDS) and 50 cm/20" (HHDEXTROD) rods
  - **HHD C Extension Rod** (HHDCEXTROD) 43 cm/17" rod
- **Spring Connectors** (HHDCONNECT) connect the PosiTest HHD series to DeFelsko or SPY rolling spring electrodes
- **Electrode Adaptors** connect to spring and brush electrodes from other manufacturers—choose between PCWI, T&R, and 266/280 adaptors—not required for SPY electrodes (see table on page 3)
  - PCWI Adaptor (HHDPCWIADPT)
  - T & R Adaptor (HHDTRADPT)
  - 266/280 Adaptor (HHD266ADPT)
- **Replacement Li-ion Batteries**
  - **HHD Battery** (HHDBATTERY) for PosiTest HHD (72 Wh)
  - **HHD C Batteries** (HHDCBATTERY) for PosiTest HHD C (4 pk)



*PosiTest HHD Verifier*



*Spring Connector*



*Electrode Adaptors*



*PosiTest HHD C Verifier*



*Handheld Wand for PosiTest HHD and HHD Basic only*

