

# PosiTector® *SmartLink*™

*Wirelessly connect PosiTector probes to your smart device*



*A Smart New Way to Measure:  
PosiTector SmartLink and free mobile  
app turns your cell phone or tablet  
into a virtual PosiTector gage*

Made for  
iPod iPhone iPad



**DeFelsko®**  
The Measure of Quality

# PosiTector® SmartLink™

**Wirelessly connect PosiTector probes to your smart device.**

## A Smart New Way to Measure

PosiTector SmartLink and free mobile app turns your cell phone or tablet into a virtual PosiTector gage

- Intuitive easy-to-use touch screen operation
- Every reading is instantly transmitted to your smart device
- Tri-color LED provides immediate feedback in dark and noisy environments
- Accepts coating thickness, environmental, and surface profile probes
- Lightweight and compact design—uses one AAA battery

## Unprecedented Mobile Integration

(No internet connection required)

Take full advantage of the simplicity and utility of your smart device including touch screen, keyboard, microphone, camera, email, WiFi, Bluetooth, cellular, dictation tools, and more

- Auto-pairing *Bluetooth Low Energy* connection works up to 10m away (30 feet)
- Create and save professional PDF reports quickly and easily
- Add images to individual readings or batches using the camera or image library
- Annotate images using drawing tools— ideal for identifying a specific location or area within an image
- Rename batches and add notes using the keyboard or microphone
- Real time graphing and statistical analysis with the swipe of a finger

## Seamless Online Integration with an Internet Connection

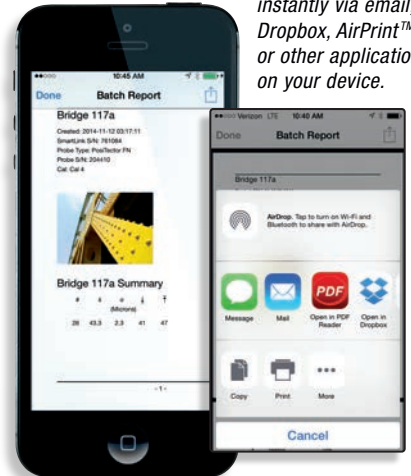
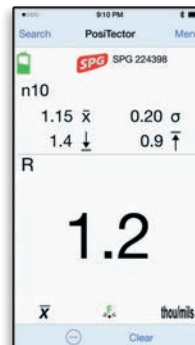
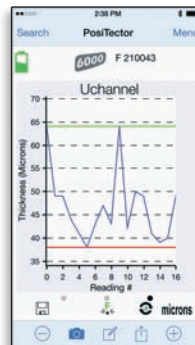
Share, backup, synchronize and report measurement data via email, apps, and the cloud

- AutoSync mode instantly backs up every reading to the cloud—No account required!
- Restore data from the cloud to any smart device—add readings, notes and images
- Live synchronization with your PosiSoft.net account
- Share professional PDF reports and CSV data instantly via email, Dropbox, AirPrint™ or other applications on your device



*PosiTector SmartLink instantly transmits every reading to your smart device.*

**Share professional PDF reports and CSV data** instantly via email, Dropbox, AirPrint™ or other applications on your device.



PosiTector SmartLink accepts PosiTector 6000, SPG, RTR H, and DPM probes easily converting to a coating thickness gage, surface profile gage or dew point meter.



**SmartLink Comes Complete** with free PosiTector App, AAA battery, protective rubber holster, wrist strap, instructions, two year warranty. Probes purchased separately.

**DeFelsko®** DeFelsko Corporation • 800 Proctor Ave. • Ogdensburg, New York 13669-2205 USA  
Toll Free 1-800-448-3835 • Tel: +1-315-393-4450 • Fax: +1-315-393-8471  
Inspection Instruments techsale@defelsko.com • www.defelsko.com





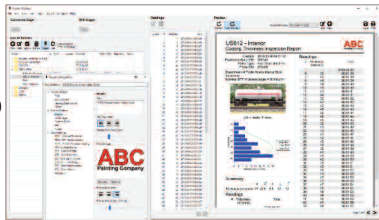
# PosiSoft® Suite of Software

Powerful ways to view and report your PosiTector and PosiTest data

## PosiSoft Desktop — PC/Mac

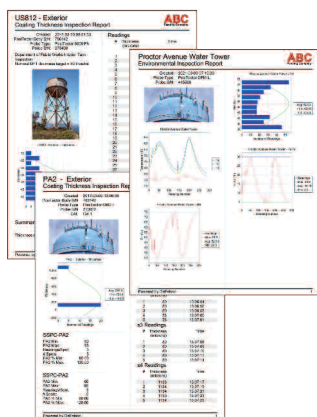
Powerful desktop software for downloading, archiving, and reporting measurement data.

- Import readings directly from the gage via USB, WiFi, or legacy PosiSoft Desktop versions
- **Jobs feature** consolidates batches into groups to keep measurement data organized and to quickly create multi-batch reports
- Fully integrates with PosiSoft.net—backup and synchronize jobs, batches, readings, and report templates to the cloud (see inset at right)
- Export readings as .csv (comma separated value) files for easy import into Excel and other spreadsheets



## Professional, Custom Reports

- Compile single or multi-batch reports from multiple probes and instrument types
- Add pictures, screen captures, notes, and more with an onscreen live preview
- Instantly create professional reports from pre-formatted report templates
- Design custom layouts and templates—add custom cover pages and logos, and choose to display charts, histograms, and/or individual readings
- Drag-and-drop Custom Fields mode—import PDF forms and overlay fields to automatically populate inspection data



## Prompted Batch Mode

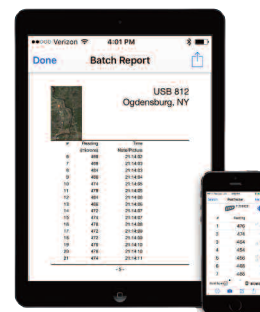
Create pre-defined batches with onscreen text and image prompts for each reading and upload to PosiTector 6000, 200, and UTG gages (*Advanced models only*).

- Ideal for ensuring a consistent measurement pattern for repetitive jobs or when specific measurement locations are required

## PosiTector App — iOS/Android

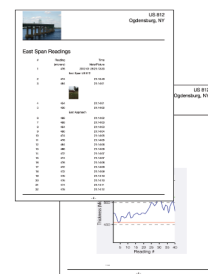
Fully-featured mobile app that connects to the PosiTector SmartLink, PosiTector Advanced gages, and the PosiTest AT-A.

- Auto pairing Bluetooth BLE connection
- Add images and notes to individual readings or batches directly from your device
- Email readings as .csv (comma separated value) files for easy import to Excel and other spreadsheets.
- Synchronize readings with PosiSoft.net—backup and synchronize jobs, batches, and readings to the cloud (see inset below)



## Mobile Reporting Solution

- Compile single or multi-batch reports from multiple probes and instrument types
- Add pictures, screen captures, notes, and more
- Email pre-formatted or custom reports from your device instantly



## PosiSoft.net

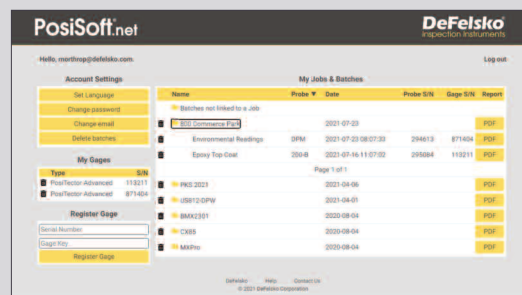
Secure storage of measurement data in the cloud.

compatible with **PosiSoft Desktop** and **PosiTector App**

- Upload measurement data directly from WiFi-connected PosiTector Advanced gages from anywhere in the world—no software required
- Synchronize and share measurement data across multiple computers

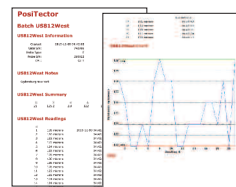
### Ideal for...

- Users with multiple computers, instruments, and office locations
- Inspection companies managing data from multiple inspectors
- Login from PosiSoft Desktop to synchronize all measurement data and stored report templates from your account



**PosiSoft.net Web Viewer** Review measurement data and print simple, pre-formatted PDF reports from any web browser—no software installation required.

## PosiSoft USB Drive — Gage based



A simple gage interface to retrieve data in a manner similar to USB flash drives or cameras. No software to install or internet connection required. Measurement data can be printed quickly from a formatted HTML report or exported in .csv format for further analysis in spreadsheets.

## PosiTector Developer Resources

•Bluetooth 4.0 •WiFi •Keyboard Mode •USB Serial

PosiTector and PosiTest AT-A instruments can integrate with third-party software, drones, ROVs, PLCs, and robotic devices using several industry-standard communication protocols including: Bluetooth 4.0, WiFi, Keyboard mode, and USB serial.



© DeFelsko Corporation USA 2021. All Rights Reserved. Technical Data subject to change without notice. • Printed in USA • PSoft.v.LW/W2110

**DeFelsko**  
Inspection Instruments

DeFelsko Corporation • 800 Proctor Ave. • Ogdensburg, New York 13669-2205 USA  
Toll Free 1-800-448-3835 • Tel: +1-315-393-4450  
techsale@defelsko.com • www.defelsko.com

Made in U.S.A.