

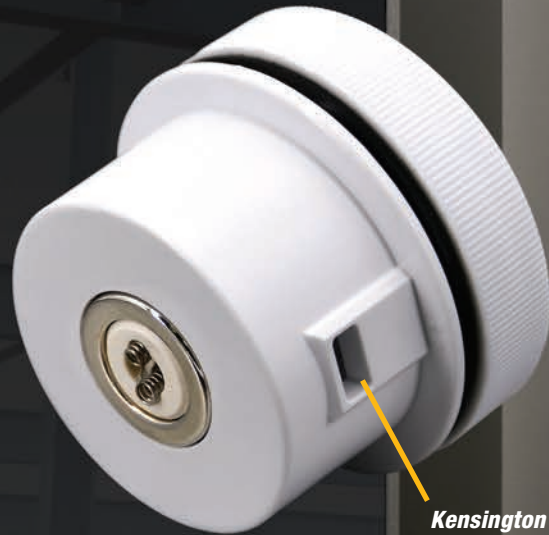
# PosiTector<sup>®</sup> **DPM L** Dew Point Meter Logger

Magnetic probe attaches to steel structures for monitoring climatic conditions

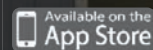
Measures and records climatic conditions including: Relative humidity, air temperature, surface temperature, dew point temperature, difference between surface and dew point temperatures, and wet bulb temperature. Ideal for surface preparation as required by ISO 8502-4.



50 mm (2")



Kensington Security Slot for anti-theft protection



D A T A S E T

#### MEASURES

RH – relative humidity  
T<sub>a</sub> – air temperature  
T<sub>s</sub> – surface temperature

#### CALCULATES

T<sub>d</sub> – dew point temperature  
T<sub>s</sub> – T<sub>d</sub> – the difference between surface and dew point temperatures  
T<sub>w</sub> – wet bulb

**DeFelsko**<sup>®</sup>  
The Measure of Quality

# PosiTector® **DPM L**

## Dew Point Meter Logger

### Features...

- Attaches to steel structures to measure and record environmental parameters independently for up to 200 days. Stored datasets can be downloaded using a PosiTector Advanced gage body or Apple/Android smart device.
- Records parameters at user selected intervals from 1 min. to 8 hrs.
- Environmentally sealed enclosure – weatherproof, dustproof and shockproof —meets or exceeds IP65
- Fast response precision sensors provide accurate, repeatable readings
- Internal memory storage of 10,000 datasets (60,000 readings)
- Kensington Security Slot** for anti-theft protection. Kensington Lock sold separately.
- Uses common lithium coin cell batteries (CR2032)
- Every stored dataset is date and time stamped
- Certificate of Calibration showing traceability to NIST included
- Conforms to national and international standards including ISO and ASTM
- Two year warranty

Specifications	Range	Accuracy	Resolution
Surface Temperature	-10° to 80° C	± 0.5° C	0.1° C
	80° to 100° C	± 1.5° C	
	14° to 175° F	± 1° F	0.1° F
	175° to 212° F	± 3° F	
Air Temperature	-10° to 60° C	± 0.5° C	0.1° C
	14° to 140° F	± 1° F	0.1° F
Humidity	0 to 100%	± 3%	0.1%
Dew Point	-60° to 60° C	± 3° C <sup>†</sup>	0.1° C
	-76° to 140° F	± 5.4° F <sup>†</sup>	0.1° F

† Dependent on RH. See [www.defelsko.com/TdAccuracy](http://www.defelsko.com/TdAccuracy) for more information.

### Ordering Guide

PosiTector DPM L	DPML
------------------	------

**PROBE COMES COMPLETE** with air/surface temperature sensors, RH sensor, two CR2032 coin cell batteries, instructions, Long Form Certificate of Calibration traceable to NIST, storage container, and two year warranty.

**Size:** Ø50 mm x ~38 mm (Ø2" w x ~1.5" h) **Weight:** 50 g (1.8 oz.) without battery



Optional Kensington Lock keeps the PosiTector DPM L safe and secure

For use with the **PosiTector App** and the **PosiTector Advanced**

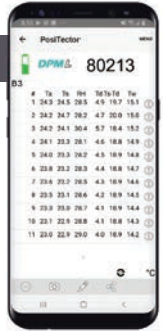


- Display and record climatic parameters from remote (wireless) PosiTector DPM L probes
- Automatically download readings once connected via **Bluetooth 4.0 Technology** (Bluetooth Smart)
- View live measurement data on screen
- Smart Trend™ indicators identify rising, falling, or stable readings
- Easily create reports and manage data with PosiSoft software

### PosiTector App

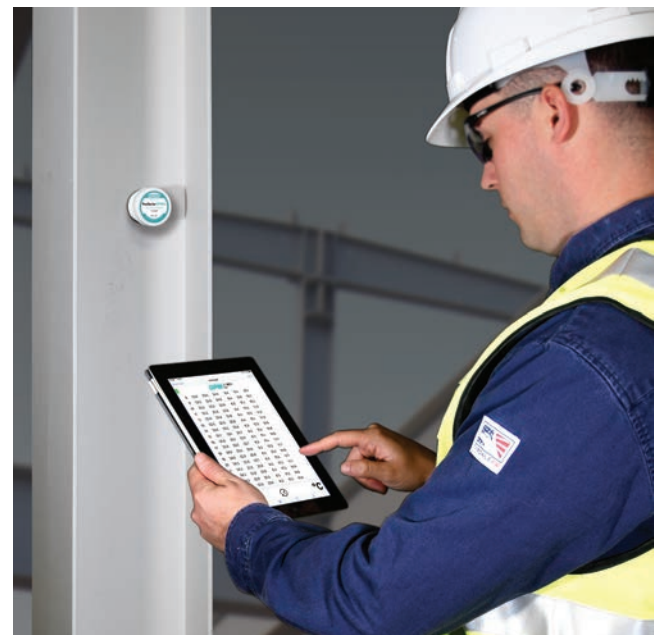
An easy-to-use mobile app (iOS/Android) that wirelessly connects to PosiTector DPM L Smart Probes.

- Automatically generate user-formatted reports and share via email, text, cloud storage services like Dropbox, and more
- Easily synchronize readings with PosiSoft Desktop software via PosiSoft.net



### PosiTector Advanced

- NEW** Storage of 250,000 readings from multiple probes in up to 1,000 batches
- On-screen graphing of measurement data
- Alarms indicate when climate conditions exceed user-selectable parameters
- Includes PosiSoft suite of software for viewing and reporting data
- View and print readings and graphs using universal PC/Mac web browsers and file explorers



Conforms to ISO 8502-4, BS 7079-B4, ASTM D3276, IMO PSPC, SSPC-PA7 and US Navy NSI 009-32.