

PosiTector[®] *DPM* Dew Point Meter



Measures and records climatic conditions including: Relative humidity, air temperature, surface temperature, dew point temperature, and difference between surface and dew point temperatures. Ideal for surface preparation as required by ISO 8502-4.



Select from 5 probe models



Available on the
App Store



WiFi

PosiTector[®]
SmartLink[™]
Compatible



Bluetooth[®]

D A T A S E T *

MEASURES

RH – relative humidity
T_a – air temperature
T_s – surface temperature
v – wind velocity

CALCULATES

T_d – dew point temperature
T_s-T_d – the difference between surface and dew point temperatures
T_w – wet bulb

* Dependent on model

DeFelsko[®]
The Measure of Quality

PosiTector® DPM Dew Point Meter

All Gages Feature...

Simple

- All readings are constantly updated and displayed simultaneously
- Alarms indicate when climate conditions are unsuitable for painting
- Large 2.8" impact resistant color touchscreen with redesigned keypad

Durable

- Weatherproof, dustproof, and water-resistant—IP65-rated enclosure
- **NEW** Clean RH Sensor mode helps restore performance after prolonged exposure to high humidity or VOC-rich environments (PRBDPM, DPM1, DPM3 only)
- Shock-absorbing protective rubber holster for added impact resistance
- Two year warranty on gage body AND probe

Accurate

- Fast response precision sensors provide accurate, repeatable readings
- Smart Trend™ indicators identify rising, falling, or stable readings
- **NEW** Relative Humidity and Surface Temperature sensors acclimate in as little as half the time of previous models (PRBDPM, DPM1, DPM3 only)
- **NEW** Field replaceable, pre-calibrated, and Certified Relative Humidity/Air Temperature sensors minimize downtime (PRBDPM, DPM1, DPM3 only)
- Certificate of Calibration showing traceability to NIST included
- Conforms to national and international standards including ISO and ASTM

Versatile

- PosiTector body accepts all PosiTector DPM, IRT, 6000, 200, RTR, SPG, SST, SHD, BHI, GLS, and UTG probes easily converting from a dew point meter to a coating thickness gage, surface profile gage, soluble salt tester, hardness tester, gloss meter, or ultrasonic wall thickness gage
- Auto Log mode records environmental parameters at user selected intervals
- Auto rotating display with Flip Lock

Powerful

- Screen Capture—save 100 screen images for record keeping and review
- USB port for fast, simple connection to a PC and to supply continuous power. USB cable included.
- PosiSoft USB Drive—stored readings and graphs can be accessed using universal PC/Mac web browsers or file explorers. No software required.
- Includes PosiSoft suite of software for viewing and reporting data

Standard Models

Includes ALL features as shown on left plus...

- Storage of 2,500 datasets per probe—stored readings can be viewed or downloaded
- Auto Log mode runs unattended on batteries for up to 50 hours or continuously via USB

Advanced Models

Includes ALL features as shown on left plus...

- Storage of 250,000 datasets from multiple probes in up to 1,000 batches
- Enhanced Auto Log mode powers the gage off between readings for up to 8 months of battery life. Each reading can be uploaded to PosiSoft.net or an FTP server using WiFi. Automatically group readings into batches at daily, weekly, or monthly intervals
- User defined alarms for all parameters—visible and audible warnings. Receive email alerts when connected to WiFi
- Trend Charts graph readings in real-time
- Touchscreen keyboard for quickly renaming batches, adding notes, and more
- WiFi technology wirelessly synchronizes with PosiSoft.net and downloads software updates
- **Bluetooth 4.0 Technology** for data transfer to a mobile device running the PosiTector App or optional portable printer. **BLE API** available for integration into third-party software.
- Store thickness, profile, environmental, salt contamination, hardness, and wall thickness measurements in individual batches
- Wet bulb temperature can be displayed and recorded

PosiTector SmartLink™ Compatible

- Wirelessly connect PosiTector DPM and DPMS probes to your smart device
- Turns your cell phone or tablet into a virtual PosiTector gage
- Includes Free mobile app

For a complete comparison visit www.defelsko.com/dpm



Remote Monitoring with Auto Log Mode

In addition to its capability as a handheld instrument, the PosiTector DPM Advanced model's innovative Auto Log feature can be used to . . .

- Monitor and record climatic conditions at user-selected intervals. Advanced models allow you to create new batches at daily, weekly, or monthly intervals.
 - Upload readings to the cloud-based PosiSoft.net website after each measurement*
 - Receive email alerts when readings exceed pre-defined parameters*
 - Upload readings to an FTP server for integration with third party software*
 - View environmental readings from one or more gages in remote locations from PosiSoft Desktop software or web-based PosiSoft.net
- * requires an internet connection

Access your data from any web-connected device.



PosiSoft Desktop software includes the PosiTector DPM Monitor feature for continuous charting of readings from one or more dew point meters. PosiTector DPM Monitor refreshes data from PosiSoft.net once every minute.



Receive email alerts when readings exceed pre-defined parameters

ALARM SETUP

| Field | ≤ | ≥ | Value |
|--------|---|---|-------|
| %RH: | ≥ | | 85.0 |
| Ta: | ≥ | | 25.0 |
| Ts: | ≥ | | 25.0 |
| Td: | ≥ | | 20.0 |
| Ts-Td: | ≥ | | 3.0 |

Alarm Sound

email Setup

OK Cancel

email Setup

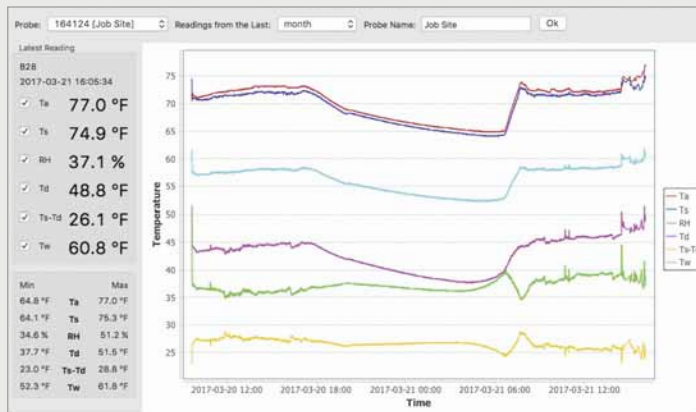
Enabled






When enabled, alarm alerts will be sent to the email address below.

email address:

Test email

OK Cancel



| | | | | | |
|---------------------------------------|--|--|--|--|--|
| |  |  |  |  |  |
| Probe Description | Integral Probe with Direct Contact Surface Temperature Sensor | Integral Probe with Infrared Surface Temperature Sensor | Integral Probe with K-type Cabled Surface Temperature Sensor | Integral Probe with Wind Speed Sensor | Cabled Probe with 1/2" NPT Threads |
| Measured/Calculated Parameters | Surface Temperature Air Temperature Wet Bulb Temperature* Relative Humidity Dew Point Temperature Surface Temperature minus Dew Point Temperature | Surface Temperature Air Temperature Wet Bulb Temperature* Relative Humidity Dew Point Temperature Surface Temperature minus Dew Point Temperature | Surface Temperature Air Temperature Wet Bulb Temperature* Relative Humidity Dew Point Temperature Surface Temperature minus Dew Point Temperature | Surface Temperature Air Temperature Wet Bulb Temperature* Relative Humidity Dew Point Temperature Surface Temperature minus Dew Point Temperature Wind Speed | Air Temperature Wet Bulb Temperature* Relative Humidity Dew Point Temperature |
| Ordering Guide | | | | | |
| Standard Body and Probe | DPM1 | DPMIR1 | DPMS1 | DPMA1 | DPMD1 |
| Advanced Body and Probe | DPM3 | DPMIR3 | DPMS3 | DPMA3 | DPMD3 |
| Probe only | PRBDPM | PRBDPMIR | PRBDPMS | PRBDPMA | PRBDPMD |

*Wet Bulb Temperature displayed/recorded on PosiTector Advanced (3) models only

ALL GAGES COME COMPLETE with environmental sensors, protective rubber holster, wrist strap, 3 AAA batteries, instructions, protective carrying case (DPM/DPMIR/DPMA/DPMD), hard shell carrying case (DPMS), protective lens shield, Long Form Certificate of Calibration traceable to NIST, USB cable, two year warranty.

***SIZE:** 127 x 66 x 25.4 mm
(5" x 2.6" x 1")

***WEIGHT:** 137 g (4.9 oz.)
without batteries

* Size and weight are for the PosiTector gage body only and do not include the probe.

Conforms to ISO 8502-4,
BS 7079-B4, ASTM D3276,
IMO PSPC, SSPC-PA7 and
US Navy NSI 009-32.



Hot-wire anemometer with your choice of wind speed measurement units — m/s, km/h, mph, ft/s, ft/m, knots. DPM A models only.



PosiTector DPM A shown with Auto rotating display with Flip Lock.



PosiTector DPM D includes 1/2" NPT threads for insertion into pipes (max 100 psi).



PosiTector DPM IR probe includes a non-contact infrared surface temperature sensor.



Analyze Readings using a web browser from anywhere – jobsite or head office.

Rugged Features...

Sealed USB Port for communicating with a PC or Mac

Weatherproof, dustproof, and shockproof



2.8" impact resistant color touchscreen display

Auto rotating display with Flip Lock and on-screen help

Ergonomic design with durable rubberized grip

Redesigned keypad for quick navigation

Sealed connector protects probe from water and dust intrusion

Field-replaceable air temperature and relative humidity sensor (DPM1, DPM3, PRBDPM only)

Built-in thermocouple or infrared surface temperature sensor



| Specifications | Range | Accuracy | Resolution |
|---|----------------|--|------------|
| Surface Temperature | -40° to 80° C | ± 0.5° C | 0.1° C |
| | 80° to 190° C | ± 1.5° C | |
| | -40° to 175° F | ± 1° F | 0.1° F |
| | 175° to 375° F | ± 3° F | |
| Infrared Surface Temperature ¹ | -70° to 380° C | ± 1° C + 1% ² | 0.1° C |
| | -94° to 716° F | ± 1.8° F + 1% ² | 0.1° F |
| Air Temperature | -40° to 80° C | ± 0.5° C | 0.1° C |
| | -40° to 175° F | ± 1° F | 0.1° F |
| Humidity | 0 to 100% | ± 3% | 0.1% |
| Wind Speed ³ | 0 to 20 m/s | ± 3% Full Scale + least significant digit | 0.1 m/s |
| | 0 to 44 mph | | 0.1 mph |
| Dew Point | -60° to 80° C | ± 3° C ⁴ | 0.1° C |
| | -76° to 175° F | ± 5.4° F ⁴ | 0.1° F |

1. DPM IR models only

2. At 23° C (73° F) ambient

3. DPM A models only

4. dependent on RH. See www.defelsko.com/TdAccuracy for more information.

| PosiTector DPM IR Specifications | |
|----------------------------------|------------------------|
| Distance to Spot Ratio (D:S) | 4:1 |
| Emissivity | Adjustable |
| Response Time | <500 ms (95% response) |

Options

PosiTector Probes

PosiTector body accepts all PosiTector DPM, IRT, 6000, 200, RTR, SPG, SST, SHD, BHI, GLS, and UTG probes easily converting from a dew point meter to a coating thickness gage, surface profile gage, soluble salt tester, hardness tester, gloss meter, or ultrasonic wall thickness gage.



Bluetooth™ Printer receives data from Advanced Models

AC Power Kit for continuous operation—works in any country

Additional K-type Sensors for use with the PosiTector DPMS only

Hand-held Surface Temperature Probe

- for spot checking hard-to-reach surfaces

Liquid Temperature Probe

- general purpose probe with stainless steel shaft

PosiTector® DPM L

Dew Point Meter Logger

Magnetic probe attaches to steel structures for monitoring climatic conditions

- For use with PosiTector Advanced gage bodies and Apple/Android smart devices
- Environmentally sealed enclosure—meets or exceeds IP65
- Records climatic conditions at user selected time intervals

For more information visit www.defelsko.com/DPML



©DeFelsko Corporation USA 2025. All Rights Reserved. Technical Data subject to change without notice. • Printed in USA • PDPM.v.LW/W2510

DeFelsko
Inspection Instruments

DeFelsko Corporation • 800 Proctor Ave. • Ogdensburg, New York 13669-2205 USA
Toll Free 1-800-448-3835 • Tel: +1-315-393-4450
techsale@defelsko.com • www.defelsko.com

Made in U.S.A.